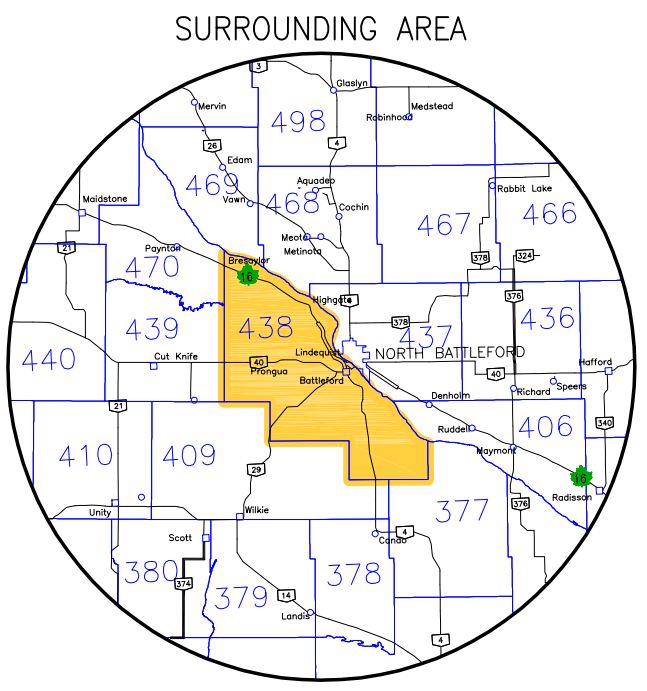
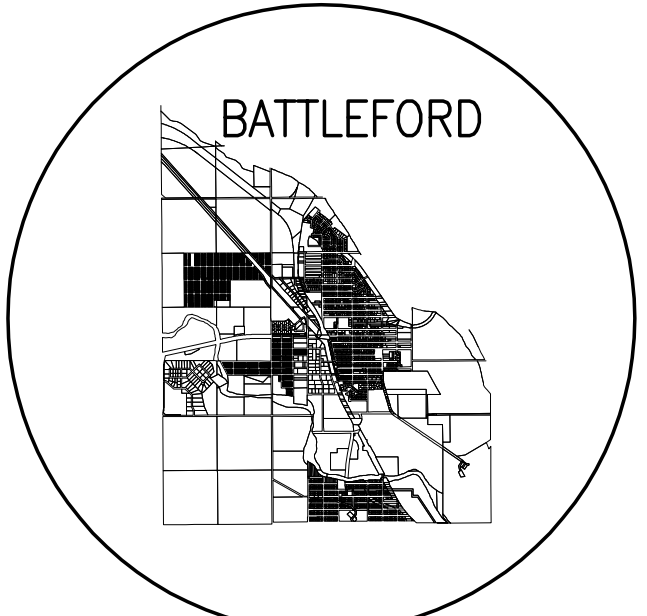
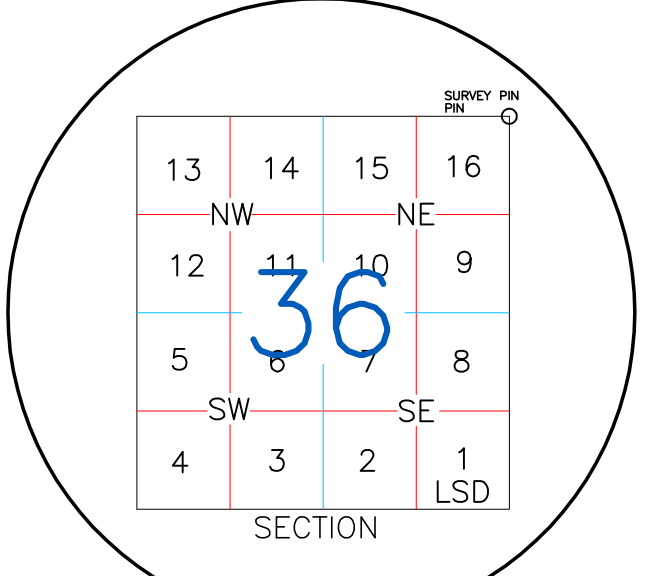


RURAL MUNICIPALITY OF BATTLE RIVER No. 438

West of the 3rd

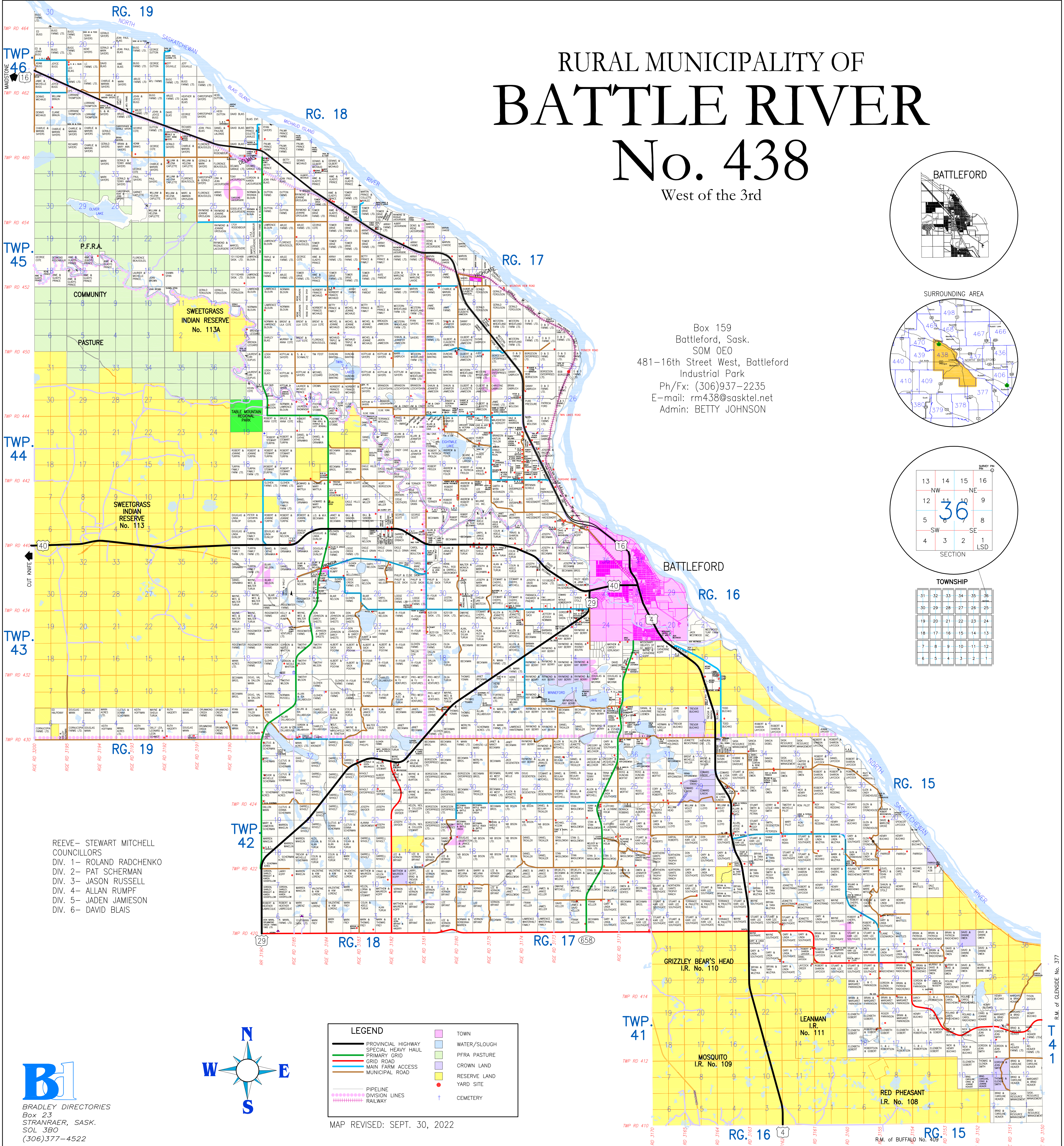


Box 159
Battleford, Sask.
SOM OEO
481-16th Street West, Battleford
Industrial Park
Ph/Fx: (306)937-2235
E-mail: rm438@sasktel.net
Admin: BETTY JOHNSON



TOWNSHIP

31	32	33	34	35	36
30	29	28	27	26	25
19	20	21	22	23	24
18	17	16	15	14	13
7	8	9	10	11	12
6	5	4	3	2	1



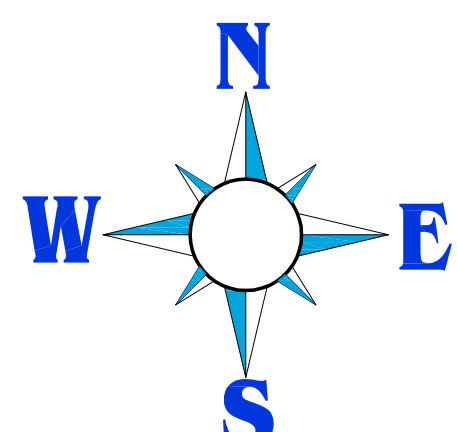
REEVE-STEWART MITCHELL
COUNCILLORS
DIV. 1- ROLAND RADCHENKO
DIV. 2- PAT SCHERMAN
DIV. 3- JASON RUSSELL
DIV. 4- ALLAN RUMPF
DIV. 5- JADEN JAMIESON
DIV. 6- DAVID BLAIS

LEGEND

- PROVINCIAL HIGHWAY
- SPECIAL HEAVY HAUL
- PRIMARY GRID
- CRID ROAD
- MAIN FARM ACCESS
- MUNICIPAL ROAD
- PIPELINE
- DIVISION LINES
- RAILWAY
- TOWN
- WATER/SLOUGH
- P.F.R.A. PASTURE
- CROWN LAND
- RESERVE LAND
- YARD SITE
- CEMETERY

MAP REVISED: SEPT. 30, 2022

BRADLEY DIRECTORIES
Box 23
STRANRAER, SASK.
SOL 3B0
(306)377-4522



T 41
R.M. of GLENSIDE No. 377
R.M. of BUFFALO No. 409